

Statement of Objectives (SOO)  
28 CPTS SOUND MASKING

Background: The 28<sup>th</sup> Comptroller (CPTS) Squadron utilizes open cubicle configurations for their personnel. The panels do not extend to the ceiling, creating a lot of noise and interruption for others. In addition, although leadership is inside hard wall offices, our doors are always open for easy access by our personnel. We are looking for a cost-effective turnkey sound masking system that will help reduce the amount of noise travelling through our offices. We do not want new furniture panels. We would prefer something that can go up into the ceiling rather than sound masking panels. The ceilings are accessible in all areas. Please refer to the attached maps for room names and numbers referenced below:

Map 1, 28 CPTS, “041. First Floor Plan”

- Room (170) is exempt from sound masking.
- Room (160) is exempt from sound masking.
- Stairwell (16T) is exempt from sound masking.
- Rooms: 163, 164, 166, 165 are all hard wall offices. Vendor to propose best option for open door hard wall office area.
- Room (162) and Corridor (16B) are open office areas with only a desk in 162, but will need sound masking
- Room (158) is part of the open area in “042. First Floor Plan”, and is an open cubicle configuration
- Sound masking does not need to cover the following areas: Room (170), Room (160) or Stairwell (16T). However, if masking areas around these locations cover these areas, it is not a problem.

Map 1, 28 CPTS, “042. First Floor Plan”

- Rooms: 161, 159, 153-1, 513-2, 153-3, 155, 154 are all hard wall offices. Vendor to propose best option for open door hard wall office area.
- Room (158) is part of the open area in “041. First Floor Plan” and is an open cubicle configuration.
- Room (156) is part of the open area and is an open cubicle configuration.
- Room (152) are part of the open area and is an open cubicle configuration.
- Room (157) is a larger space surrounded by hard walls. Room is being utilized for mass trainings, no cubicles.

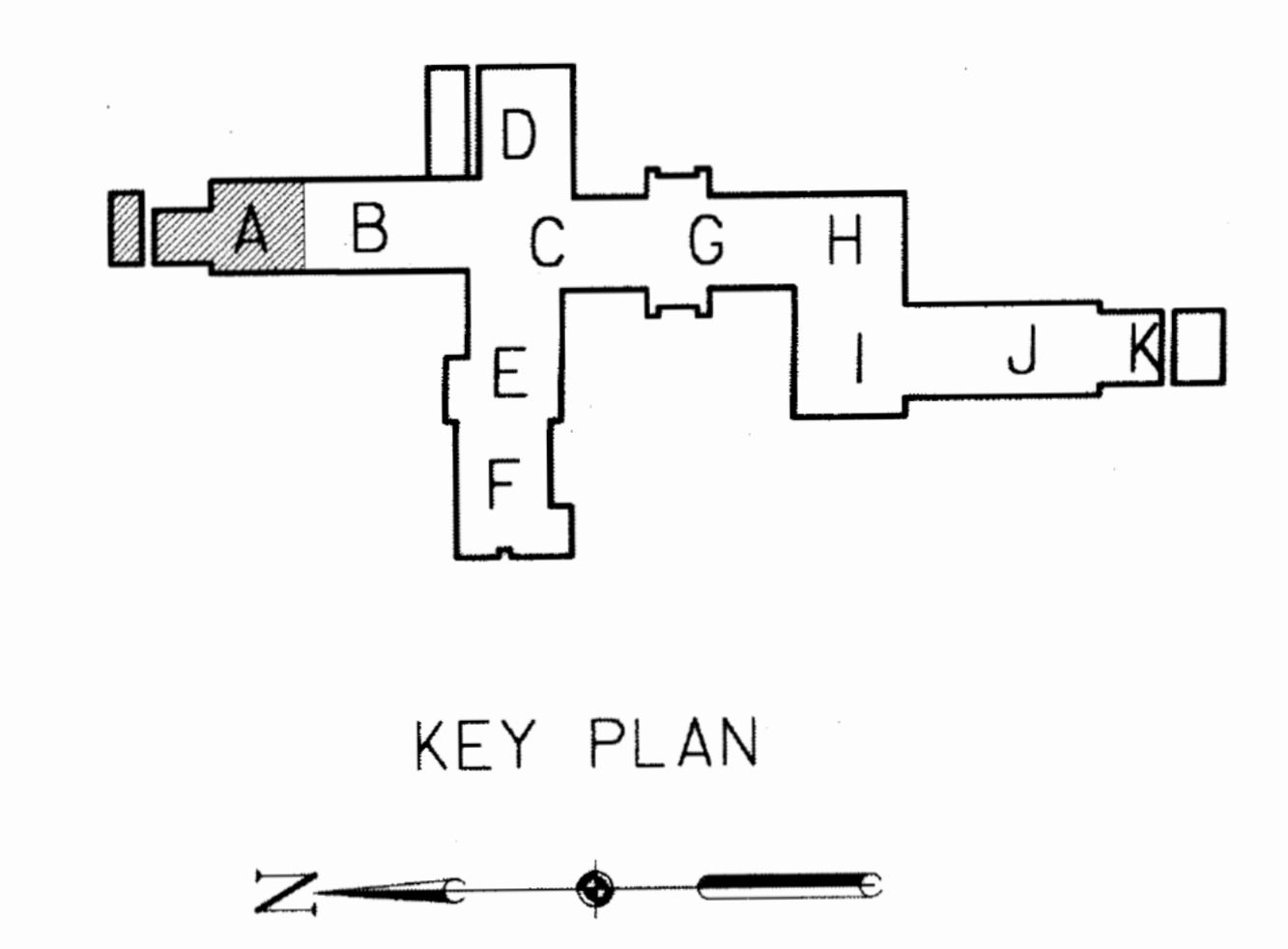
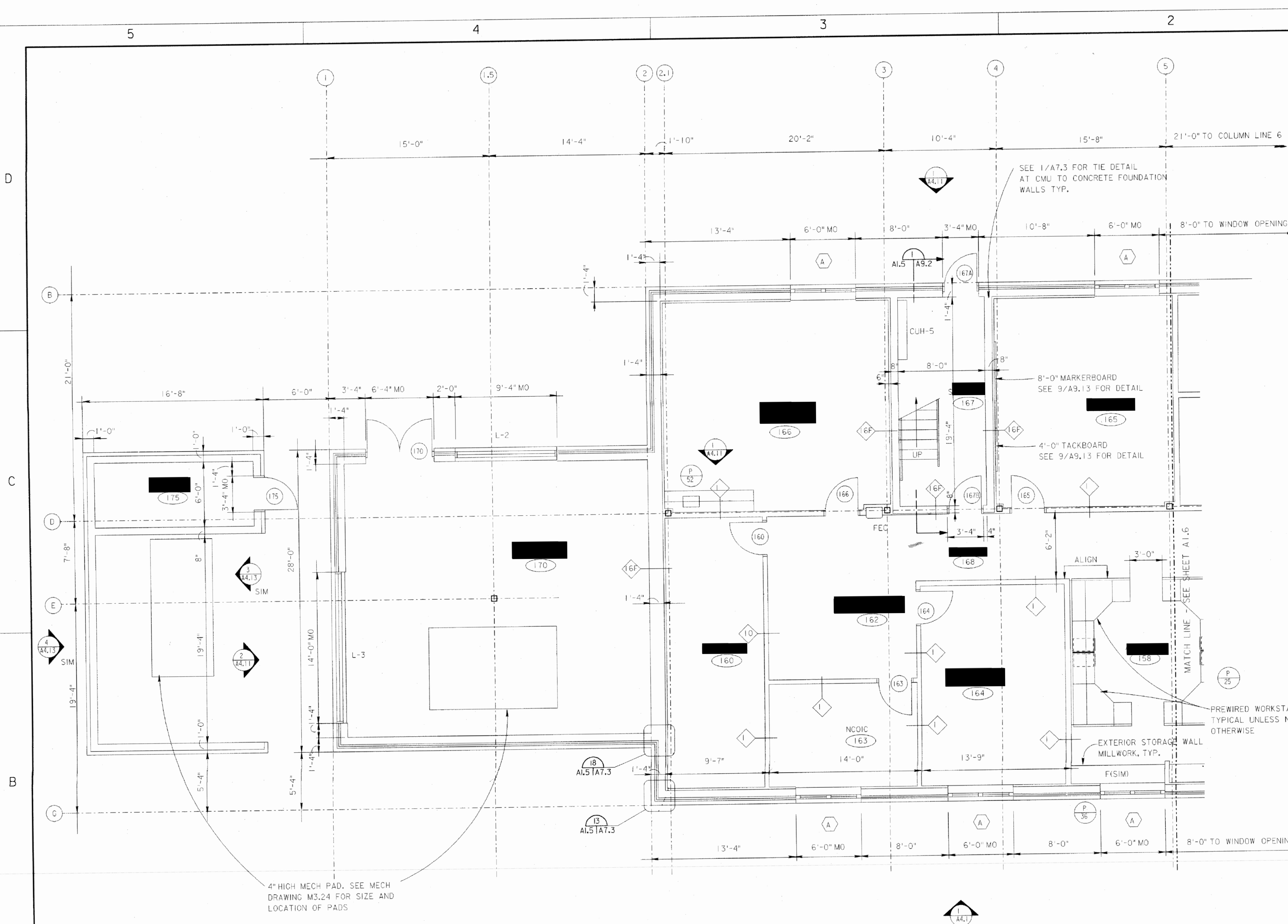
Deliverables

- Contractor must provide a Statement of Work detailing how the work will be achieved as part of their proposal submission.

Attachments:

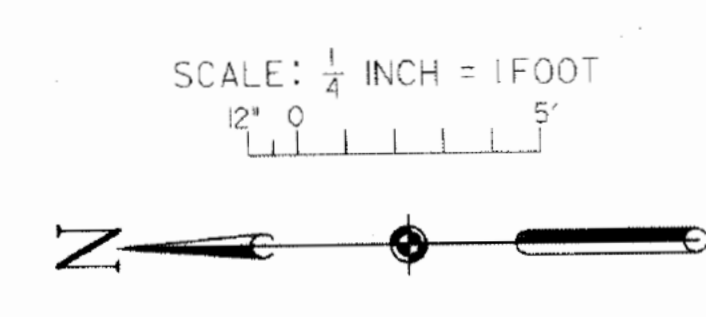
Map 1, 28 CPTS, “041. First Floor Plan”

Map 1, 28 CPTS, “042. First Floor Plan”



- ### GENERAL NOTES
- FOR ROOM FINISH SCHEDULE AND CEILING HEIGHTS CORRESPONDING TO ROOM NAME AS DESIGNATED BY: RMNAME REFER TO SHEETS A6.1, A6.2 & A6.3.
  - FOR DOOR SCHEDULE & DOOR TYPES DESIGNATED BY: XXXX REFER TO SHEETS A6.4, A6.5 & A6.6.
  - FOR WINDOW SCHEDULE & WINDOW TYPES DESIGNATED BY: WW REFER TO SHEETS A6.7.
  - FOR LOUVER TYPES DESIGNATED BY: "L-X" REFER TO SHEET A6.7.
  - FOR PARTITION TYPES DESIGNATED BY: "PP" REFER TO SHEET A5.20.
  - FOR LOCATION OF FIRE RATED PARTITIONS REFER TO REFLECTED CEILING PLAN SHEETS A2.C1, A2.C2, & A2.1 THROUGH A2.8.
  - DIMENSIONS SHOWN TO MASONRY WALLS ARE NOMINAL UNLESS NOTED OTHERWISE.
  - GWB PARTITIONS ARE DIMENSIONED TO FACE OF STUD UNLESS NOTED OTHERWISE.
  - COMPOSITE PARTITIONS OF GWB & CMU ARE DIMENSIONED TO FACE OF CMU. REFER TO PARTITION TYPES ON SHEET A5.20 FOR GWB AND FURRING DIMENSIONS.
  - FOR REINFORCEMENT AT MASONRY WALLS REFER TO STRUCTURAL DRAWINGS.
  - FOR MILLWORK AT EXTERIOR STORAGE WALLS REFER TO OPTION 2: SHEET A9.81.
  - WORKSTATIONS SHOWN DASHED NIC.
  - REFER TO 1/A9.13 AND 2/A9.13 FOR DETAILS AT FIRE EXTINGUISHER CABINETS (FEC) TYP.
  - FOR A TYPICAL PREWIRED WORKSTATION PLAN ADDED WITH P-25, SEE 1/A1.27.
  - INSTALL SOLID WOOD BLOCKING BETWEEN STUDS AT TV LOCATION IN ROOMS 330, 350(2), 420, 421, AND 425. COORDINATE LOCATION, SIZE, AND HEIGHT, ETC. OF BLOCKING WITH ON SITE GOVERNMENT REPRESENTATIVE.

FIRST FLOOR PLAN - PART A

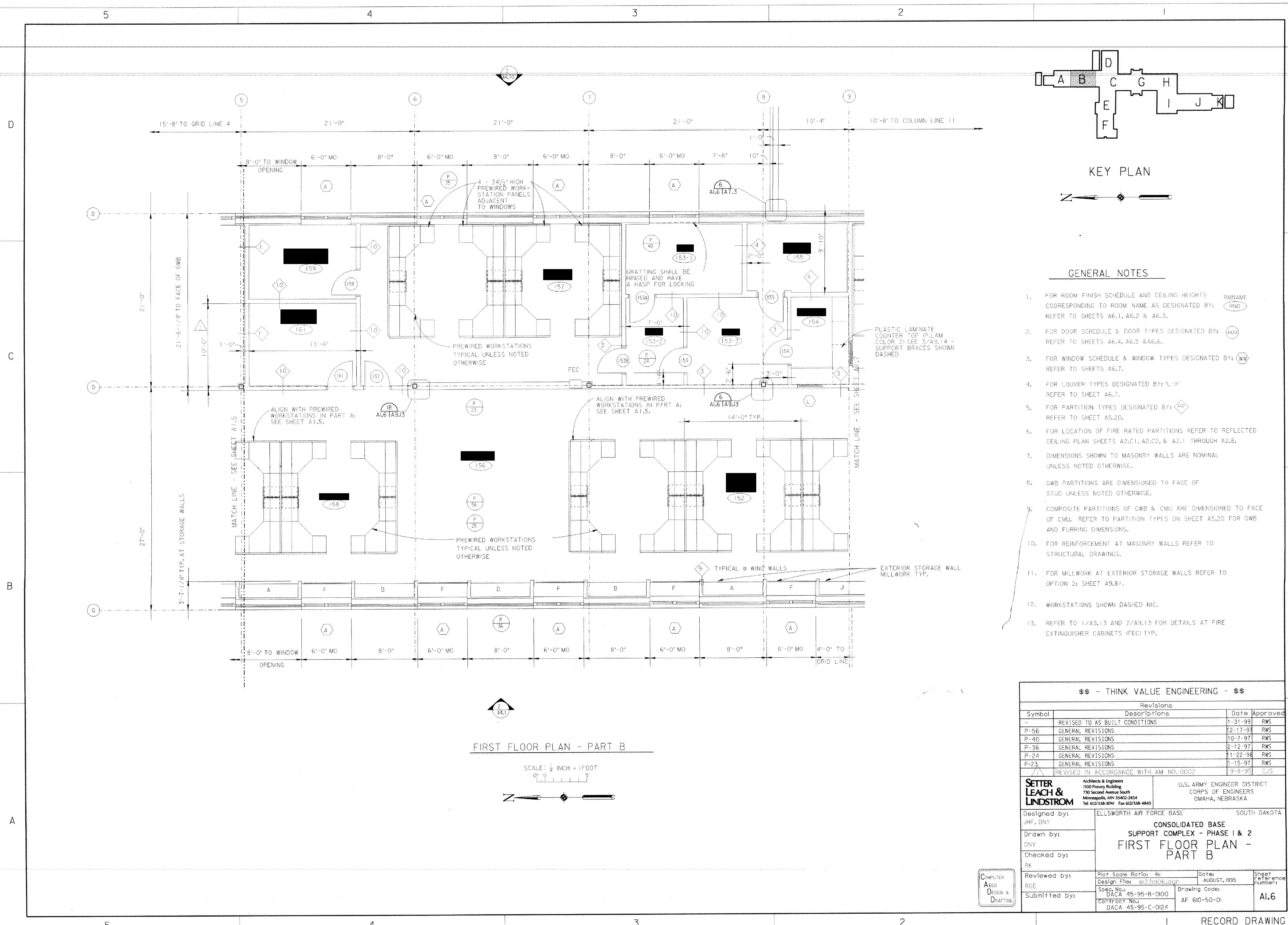


Revisions			
Symbol	Descriptions	Date	Approved
-	REVISED TO AS BUILT CONDITIONS	1-31-99	RWS
P-52	GENERAL REVISIONS	10-6-97	RWS
P-40	GENERAL REVISIONS	10-7-97	RWS
P-36	GENERAL REVISIONS	2-12-97	RWS
P-25	GENERAL REVISIONS	11-22-96	RWS

<b>SETTER LEACH &amp; LINDSTROM</b> Architects & Engineers 1100 Parkway Building 730 Second Avenue South Minneapolis, MN 55402-2454 Tel 612/338-8741 Fax 612/338-4840	U.S. ARMY ENGINEER DISTRICT CORPS OF ENGINEERS OMAHA, NEBRASKA
Designed by: JHF, DNY Drawn by: DNY, RHD Checked by: RK Reviewed by: RGE Submitted by:	ELLSWORTH AIR FORCE BASE SOUTH DAKOTA <b>CONSOLIDATED BASE          SUPPORT COMPLEX - PHASE I &amp; 2          FIRST FLOOR PLAN -          PART A</b> Plot Scale Ratio: 4:1 Design File: e123a105.dgn Spec. No.: DACA 45-95-B-0100 Contract No.: DACA 45-95-C-0124
Date: AUGUST, 1995 Drawing Code: AF 610-50-01	Sheet Reference number: <b>A1.5</b>





KEY PLAN

GENERAL NOTES

1. FOR ROOM FINISH SCHEDULE AND CEILING HEIGHTS CORRESPONDING TO ROOM NAME AS DESIGNATED BY: REFER TO SHEETS A6.1, A6.2 & A6.3.
2. FOR DOOR SCHEDULE & DOOR TYPES DESIGNATED BY: REFER TO SHEETS A6.4, A6.5 & A6.6.
3. FOR WINDOW SCHEDULE & WINDOW TYPES DESIGNATED BY: REFER TO SHEETS A6.7.
4. FOR LOUVER TYPES DESIGNATED BY: REFER TO SHEET A6.7.
5. FOR PARTITION TYPES DESIGNATED BY: REFER TO SHEET A5.20.
6. FOR LOCATION OF FIRE RATED PARTITIONS REFER TO REFLECTED CEILING PLAN SHEETS A2.C1, A2.C2, & A2.1 THROUGH A2.8.
7. DIMENSIONS SHOWN TO MASONRY WALLS ARE NOMINAL UNLESS NOTED OTHERWISE.
8. GWB PARTITIONS ARE DIMENSIONED TO FACE OF STUD UNLESS NOTED OTHERWISE.
9. COMPOSITE PARTITIONS OF GWB & CMU ARE DIMENSIONED TO FACE OF CMU. REFER TO PARTITION TYPES ON SHEET A5.20 FOR GWB AND FURRING DIMENSIONS.
10. FOR REINFORCEMENT AT MASONRY WALLS REFER TO STRUCTURAL DRAWINGS.
11. FOR MILLWORK AT EXTERIOR STORAGE WALLS REFER TO OPTION 2: SHEET A9.81.
12. WORKSTATIONS SHOWN DASHED NIC.
13. REFER TO 1/A9.13 AND 2/A9.13 FOR DETAILS AT FIRE EXTINGUISHER CABINETS (FEC) TYP.

FIRST FLOOR PLAN - PART B

SCALE: 1/4" = 1' FOOT



\$\$\$ - THINK VALUE ENGINEERING - \$\$\$				
Revisions				
Symbol	Descriptions	Date	Approved	
-	REVISED TO AS BUILT CONDITIONS	1-31-99	RWS	
P-56	GENERAL REVISIONS	12-17-97	RWS	
P-40	GENERAL REVISIONS	10-7-97	RWS	
P-36	GENERAL REVISIONS	2-12-97	RWS	
P-24	GENERAL REVISIONS	11-22-96	RWS	
P-23	GENERAL REVISIONS	1-15-97	RWS	
Δ	REVISED IN ACCORDANCE WITH AM NO. 0002	9-8-95	CUS	

<b>SETTER LEACH &amp; LINDSTROM</b> Architects & Engineers 1100 Penny Building 730 Second Avenue South Minneapolis, MN 55402-2454 Tel 612/338-8741 Fax 612/338-4840		U.S. ARMY ENGINEER DISTRICT CORPS OF ENGINEERS OMAHA, NEBRASKA	
Designed by: JHF, DNY		ELLSWORTH AIR FORCE BASE SOUTH DAKOTA	
Drawn by: DNY		CONSOLIDATED BASE SUPPORT COMPLEX - PHASE I & 2	
Checked by: RK		FIRST FLOOR PLAN - PART B	
Reviewed by: RGE		Plot Scale Ratio: 4: Design File: a123a106.dgn	Date: AUGUST, 1995
Submitted by:		Spec. No.: DACA 45-95-B-0100	Drawing Code: AF 610-50-01
		Contract No.: DACA 45-95-C-0124	Sheet reference number: <b>A1.6</b>

