



Win the Fight - Strengthen the Team - Prepare for the Future

Restoration Advisory Board (RAB)

19 March 19

Colonel John R. Edwards
Commander, 28th Bomb Wing

Prepare for the Future

***Purpose: Update Public on Status of Ellsworth's
PFOS/PFOA Efforts***



Question & Answer Format

➤ **Comment/Question Cards**

- Available at sign-in table
- Please write questions on card provided
- Written questions submitted will be addressed tonight
- A public affairs officer will collect the comments/questions cards



Agenda

- **Perfluorooctane sulfonic acid (PFOS) and perfluorooctanic acid (PFOA)**
- **Remedial Investigation**
- **Basewide Site Inspection**
- **Off-Base Response**
 - Well Survey
 - Maps of Phase 1-5
- **Current PFOS/PFOA Actions**
- **Future PFOS/PFOA Actions**
- **Online Administrative Record**
- **Closing Comments**



PFOS and PFOA

- Man-made chemicals found in commonly used products
 - Fire fighting foam
 - Nonstick cookware (Teflon)
 - Stain-resistant fabric/carpet
 - Food packaging
- 1970 – Air Force began using aqueous film forming foam(AFFF)
- May 2016 - EPA established Lifetime Health Advisory (LHA) levels for drinking water of 70 parts per trillion (ppt) for PFOS and PFOA (combined)
- November 2016 - Ellsworth discontinued use of legacy AFFF

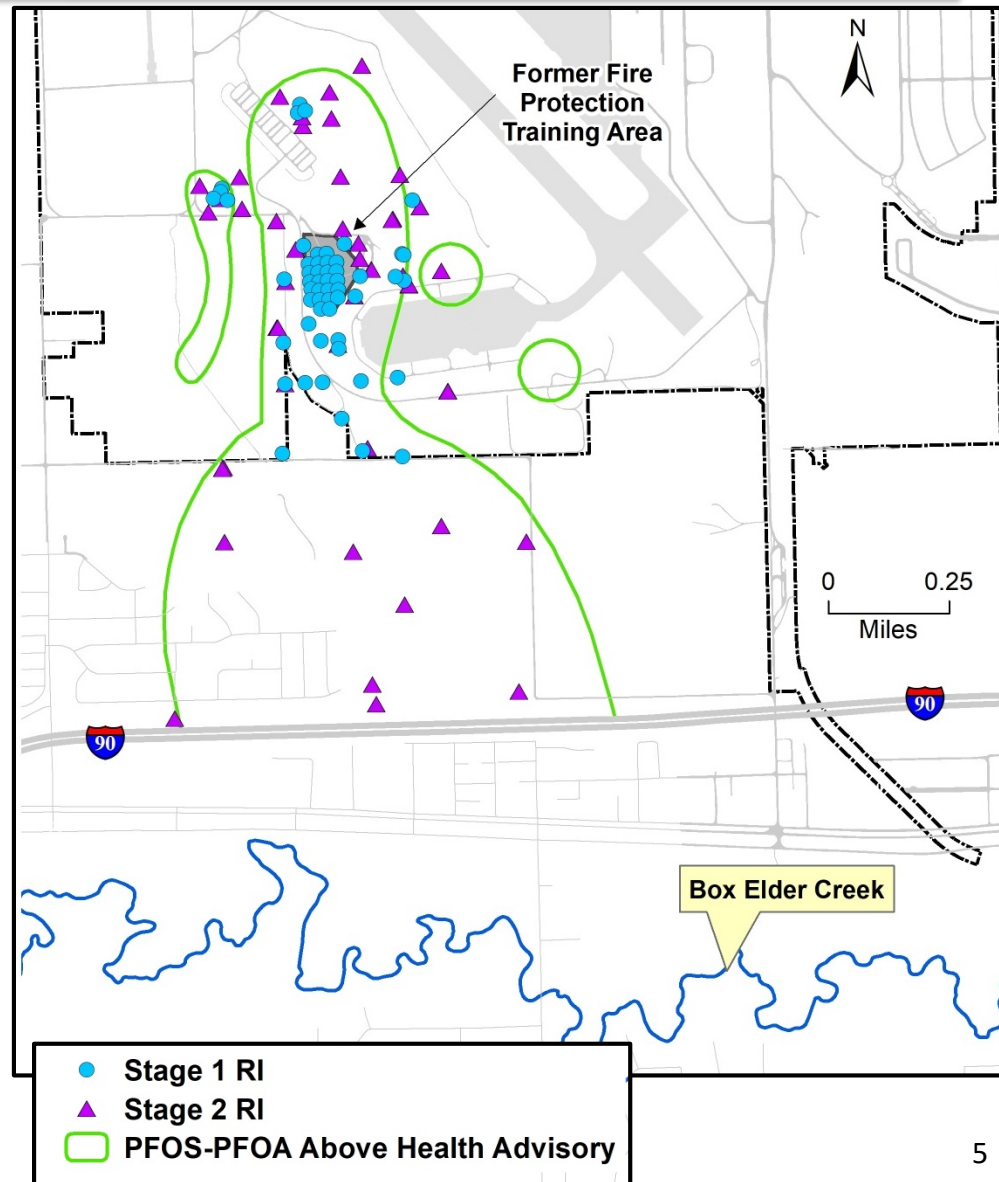




PFOS and PFOA Remedial Investigation



- 2012: PFOS/PFOA first detected at the former fire training area
- 2015: On-base sampling completed
- 2017: Off-base sampling south to I-90 completed
- 2018: Preparing Work Plan for sampling south of I-90
- 2019 Stage 3 fieldwork scheduled for July

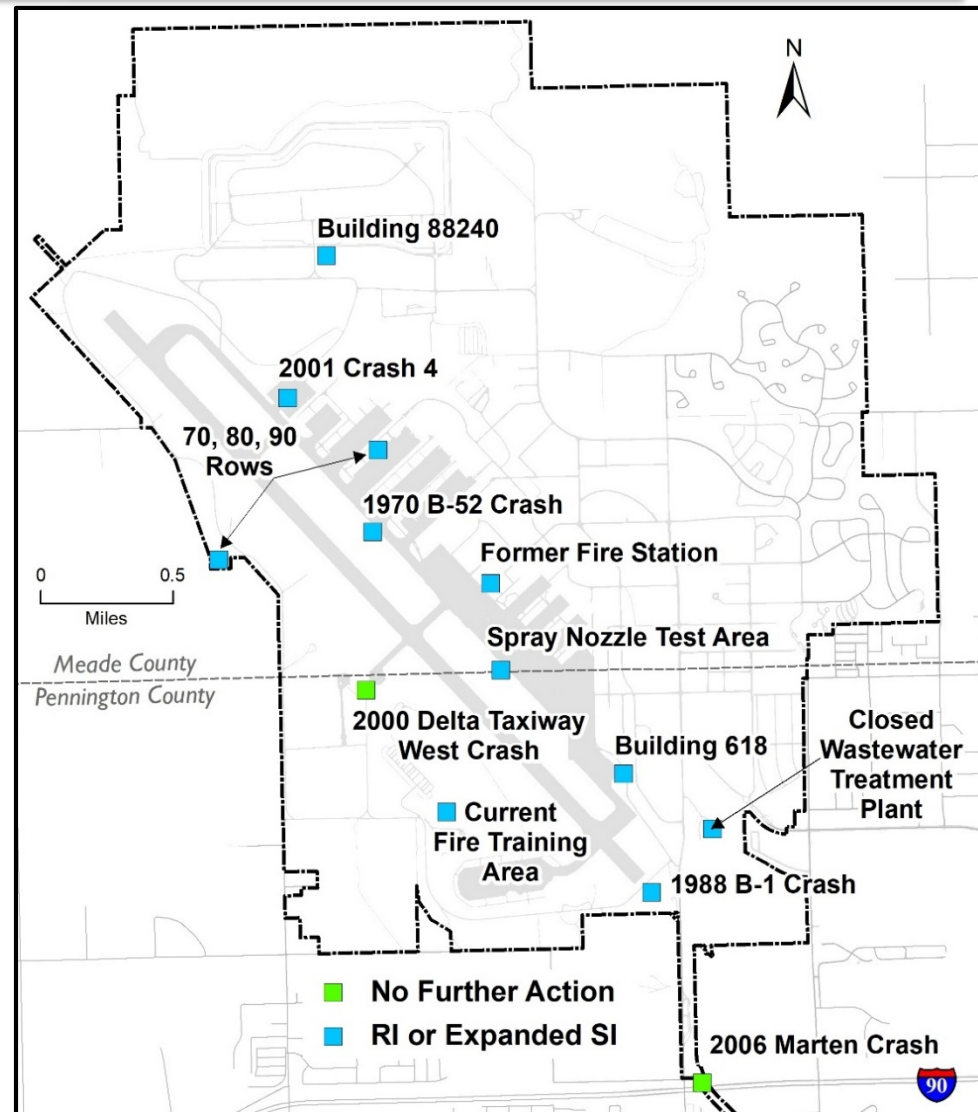




PFOS and PFOA Basewide Site Inspection



- 2015: Preliminary Assessment identified 12 locations for further investigation
- 2016: Work plan under preparation
- 2018: Fieldwork completed
- Final Report recommends further investigation at 10 sites and No Further Action at 2 sites





Off-Base Response (Well Survey)



- **Conducting Off-Base Door to Door Survey to identify and sample private drinking water wells**
 - 1,505 properties evaluated (Phase 1-4)
 - 567 properties visited
 - 83 Private wells sampled
 - 21 drinking water wells above EPA Lifetime Health Advisory
- **Phase 1 (19 Sep 2018)**
 - 12 drinking water wells sampled
 - 9 drinking water wells above EPA Health Advisory of 70 ppt
 - Bottled Water provided weekly to residents
 - 1 well provides water to mobile home park with approximately 65 homes
- **Phase 2 (29 Oct 2018)**
 - 30 shallow drinking water wells sampled
 - 2 drinking water wells above EPA Health Advisory
 - Bottled Water provided weekly residents



Off-Base Response Well Survey (Cont.)



- **Conducting Off-Base Door to Door Survey to identify and sample private drinking water wells**
- **Phase 3 (27 Nov 2018)**
 - 10 drinking water wells sampled
 - 4 drinking water wells above EPA Health Advisory
 - Bottled Water being provided weekly to impacted residents
- **Phase 4 (07 Jan 2019)**
 - 10 drinking water wells sampled
 - 6 drinking water wells above EPA Health Advisory
 - Bottled Water being provided weekly to impacted residents
- **Phase 5 (11 Mar 2019)**
 - 106 properties evaluated
 - 56 drinking water wells sampled
 - Analytical results expected week of 01 April 2019
 - Bottled Water will be provided as necessary to impacted residents



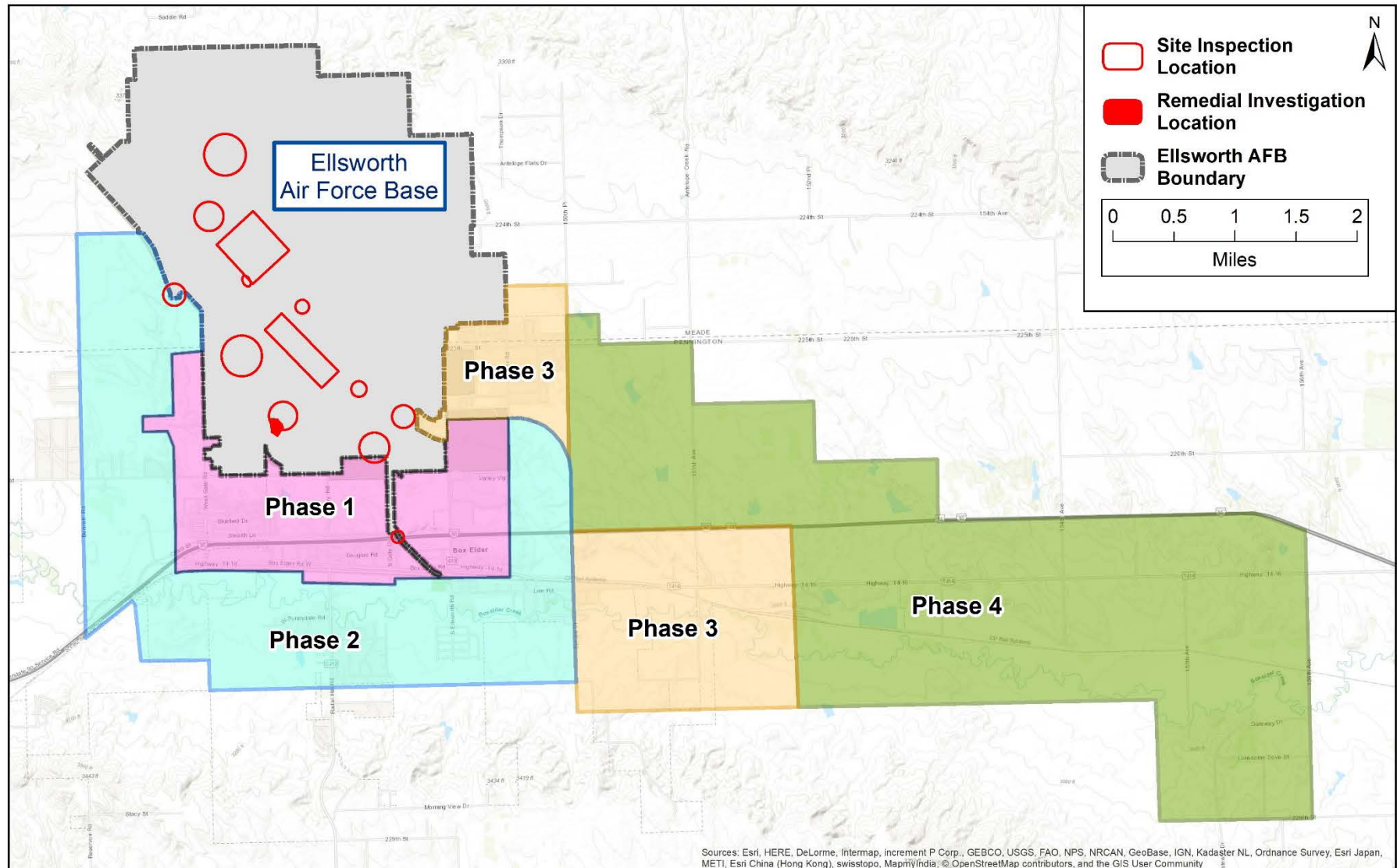
Off-Base Response (Cont.)

- **ONLY** applies to private drinking water wells
- **NO IMPACTS** if you live on **ELLSWORTH** or are connected to the Southwest Waterline
 - Ellsworth drinking water from Rapid City
 - Questions, contact 28 MDG (Bioenvironmental Engineering)
- **NO IMPACTS** to **BOX ELDER CITY WATER**
 - If you pay a **BOX ELDER WATER BILL**, you are connected to their water system
 - City of Box Elder's drinking water comes from deep wells (approximately 4,500 feet deep)
 - Questions, contact the City of Box Elder



Off-Base Response (Cont.)

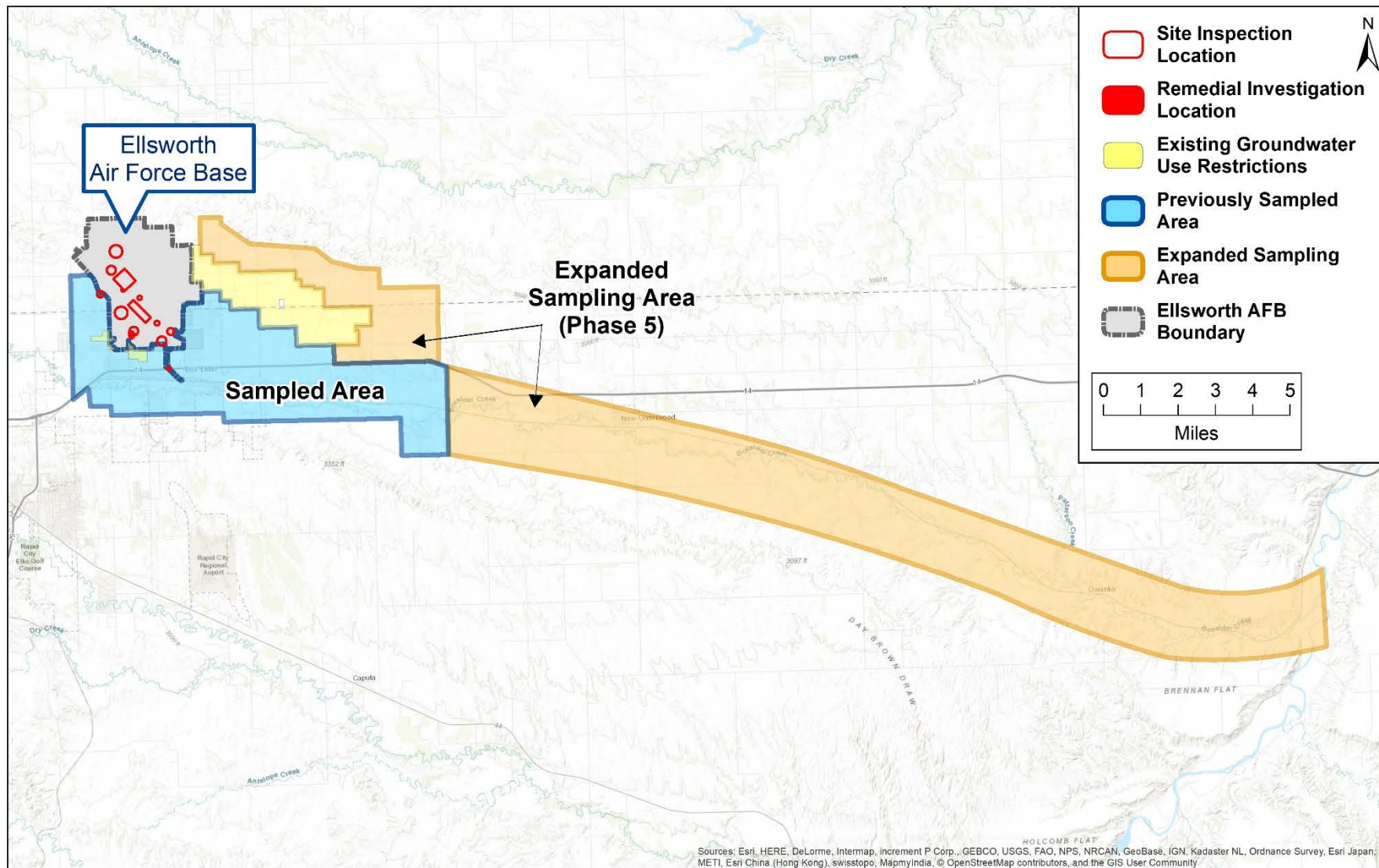
Map of Phase 1-4





Off-base Response (Cont.)

Map of Phase 5





Current PFOS/PFOA Actions

- Continue PFOS/PFOA Remedial Investigation
- Complete identification and sampling of impacted drinking water wells
- Meet with impacted property owners to explain mitigation options
 - Option 1 – Connect to municipal water supply system
 - Option 2 – Install point of use reverse osmosis system
 - Option 3 – Install point of entry carbon block filtration system
- Design/Install mitigation option at impacted properties



Future PFOS/PFOA Actions

- Finalize the PFOS/PFOA Remedial Investigation
- Study long term solution for PFOS/PFOA impacted drinking water wells



Online Administrative Record

- Ellsworth's administrative records are available electronically *
- Online database is easily accessible to the public via a computer with internet access

<http://afcec.publicadmin-record.us.af.mil>

*The administrative record is also available for viewing online by visiting any public library that provides internet access, including:

Box Elder/Douglas School District Community Library
Douglas High School
420 Patriot Drive
Box Elder, SD 57719



Closing Comments

- **Closing Comments**
 - Colonel John R. Edwards
- **Breakout Q & A**
 - Public affairs officer

